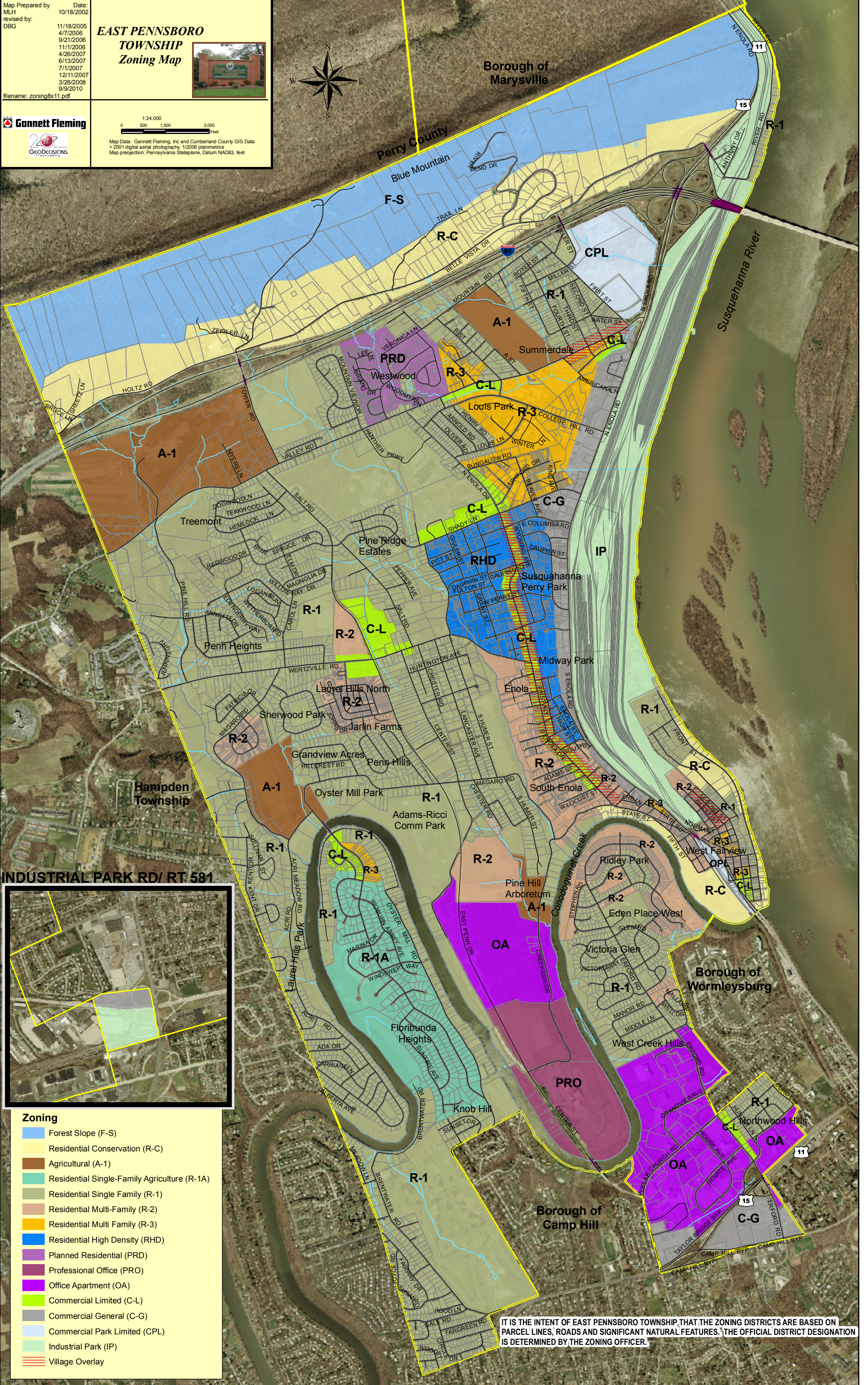


Map Prepared by: MLH  
 revised by: DBG  
 Date: 10/18/2002  
 11/18/2005  
 4/7/2006  
 9/21/2006  
 11/1/2006  
 4/26/2007  
 6/13/2007  
 7/1/2007  
 12/11/2007  
 3/28/2008  
 9/9/2010  
 filename: zoning8x11.pdf

**EAST PENNSBORO TOWNSHIP Zoning Map**



Scale: 1:24,000  
 0 500 1,000 2,000 Feet  
 Map Data: Gannett Fleming, Inc and Cumberland County GIS Data  
 > 2001 digital aerial photography, 1/2006 planimetrics  
 Map projection: Pennsylvania Stateplane, Datum NAD83, feet



- Zoning**
- Forest Slope (F-S)
  - Residential Conservation (R-C)
  - Agricultural (A-1)
  - Residential Single-Family Agriculture (R-1A)
  - Residential Single Family (R-1)
  - Residential Multi-Family (R-2)
  - Residential Multi Family (R-3)
  - Residential High Density (RHD)
  - Planned Residential (PRD)
  - Professional Office (PRO)
  - Office Apartment (OA)
  - Commercial Limited (C-L)
  - Commercial General (C-G)
  - Commercial Park Limited (CPL)
  - Industrial Park (IP)
  - ▬▬▬ Village Overlay

IT IS THE INTENT OF EAST PENNSBORO TOWNSHIP, THAT THE ZONING DISTRICTS ARE BASED ON PARCEL LINES, ROADS AND SIGNIFICANT NATURAL FEATURES. THE OFFICIAL DISTRICT DESIGNATION IS DETERMINED BY THE ZONING OFFICER.