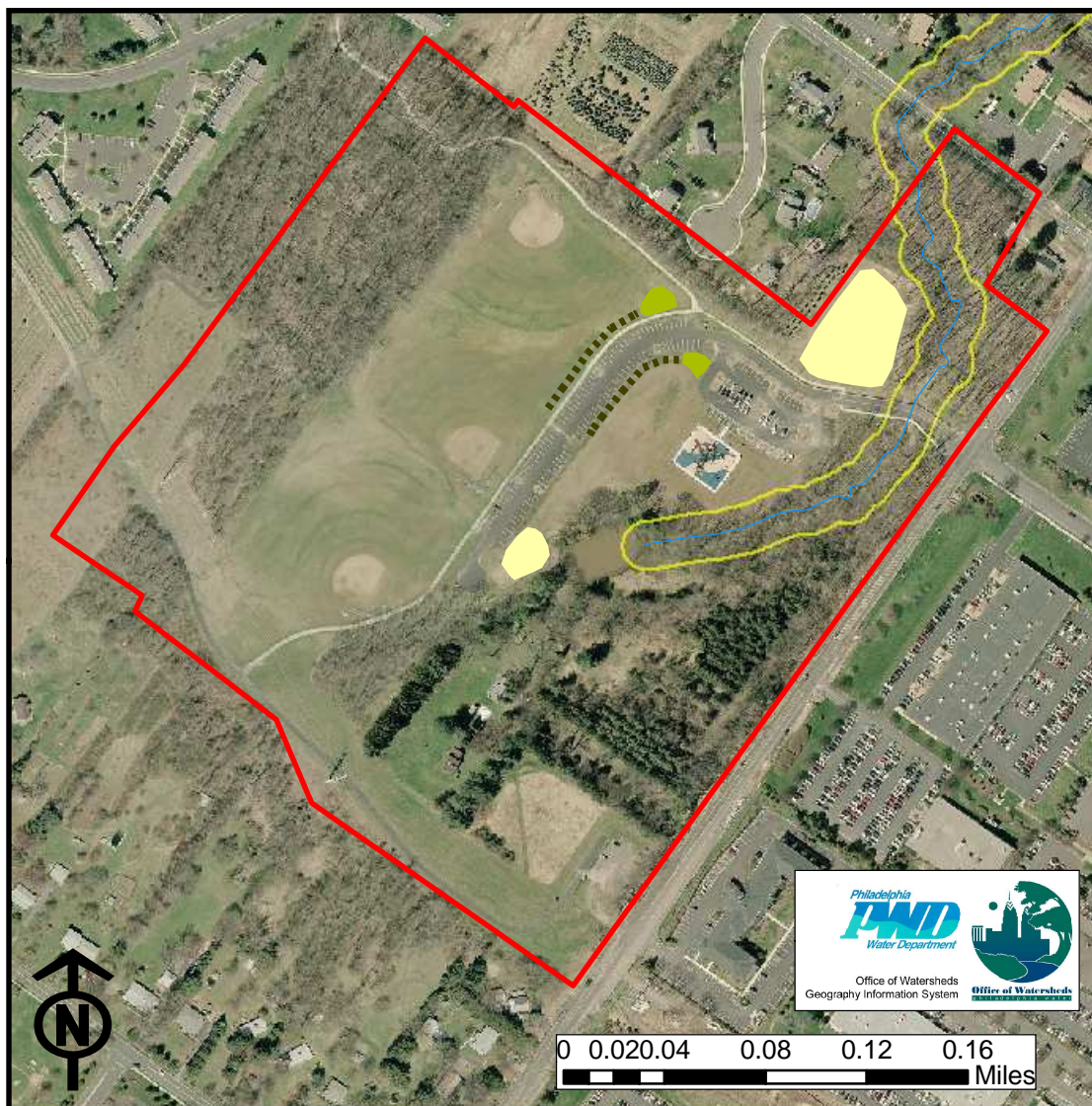


Horsham Lukens Park









Project Headwaters Phase I Implementation GGII Grant
 Site 3 - Lukens Park
 540 Dresher Rd
 Horsham, PA

Project description

The proposed work will involve creating two (2) bioretention areas at existing stormwater collection points; retrofitting two (2) existing stormwater basins to provide water quality treatment and extended detention; and the conversion of approximately 500 l.f. of grassed swale into a biofiltration swale with periodic check dams. In addition to water quality benefits, the project will enhance the visual appeal of the park through the planting of swales, biofiltration swales, and extended detention basins with native wildflowers and grasses. The project design will provide water quality treatment and channel protection while enhancing existing park uses and values. The project will be closely coordinated with Horsham Township to ensure maximum community benefit.

LEGEND

-  50 ft. buffer
-  Stream
-  Park boundary
-  Pr. biofiltration swale w/ check dams
-  Pr. bioretention area
-  Pr. extended detention water quality basin