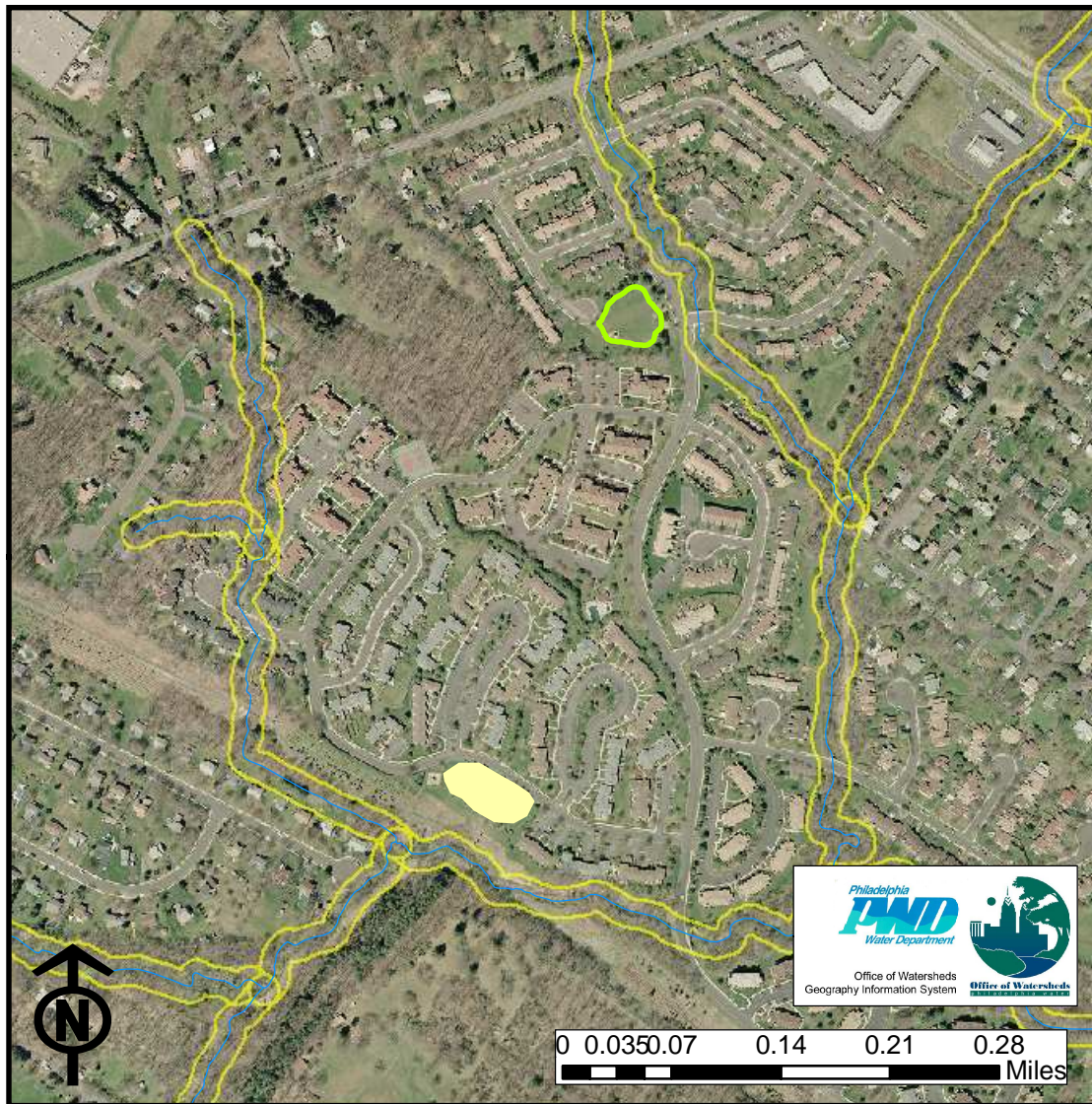


Saw Mill Valley Detention Basins



Project Headwaters Phase I Implementation GG II Grant
 Site 2 - Saw Mill Valley
 Whetstone Drive
 Horsham, PA

LEGEND



50 ft. buffer
 Stream



Pr. extended detention water
 quality basin

Project Description

The project will involve retrofitting one (1) existing detention basin within the Saw Mill Valley Development in Horsham Township. The area of the basin is approximately 35,000 s.f. The basin outlet will be modified to provide extended detention while maintaining flood control performance. Sediment forebays will be installed at the basin inlets. To reduce costs, regrading of the basin floor will be limited. Natural vegetation will be planted throughout each basin to provide water quality treatment and to provide aesthetics. The project will be closely coordinated with Horsham Township and surrounding residents to ensure maximum benefit.