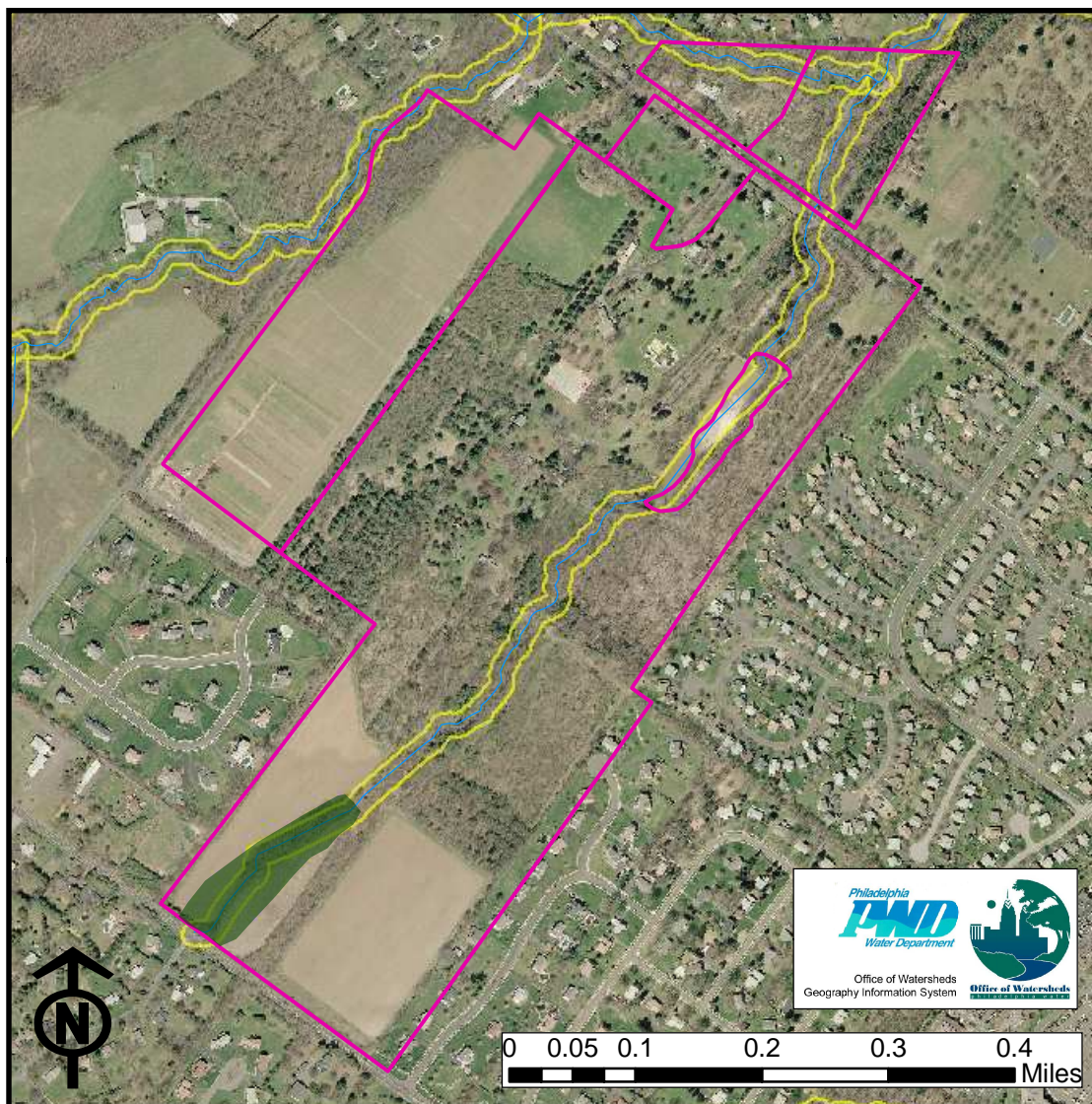


College Settlement Camps







Project Headwaters Phase I Implementation GG II
 Site 1 - College Settlement Camps
 600 Witmer Road
 Horsham, PA 19044

Project Description

The project will involve the construction of riparian stormwater wetlands along an approximately 950 ft. stretch of headwater stream within College Settlement Camp (see concept design, next page) The wetland areas, which total 2 acres, will extend 50-100 feet on either side of the stream. The riparian wetlands will enhance habitat, while providing extended detention and water quality treatment. The stormwater treatment will help to stabilize an incising stream channel located immediately downstream of the proposed wetland creation. Changes to the channel will be monitored to assess the efficacy of this approach. Existing trees and vegetation will be preserved. Close coordination with College Settlement Camps will facilitate the inclusion of the wetlands into the Camp's educational programming.

LEGEND

-  Property boundary
-  50 ft. buffer
-  Stream
-  Pr. riparian stormwater wetlands